



A High Slew-Rate AMLCD Source Driver Output Buffer Applicable for Wide Load Range

~~~ Chip {1} ~~~

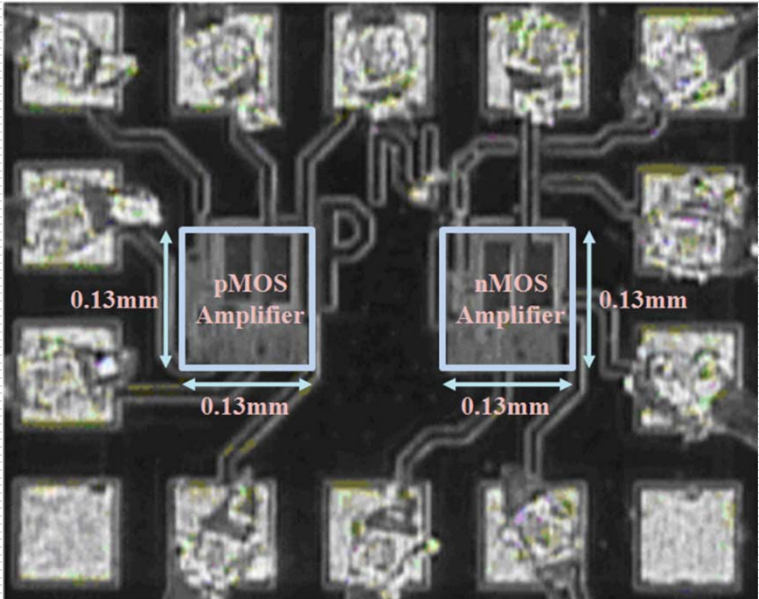
nMOS Amplifier:  $0.13 \times 0.13 \text{ mm}^2$



~~~ Chip {2} ~~~

nMOS Amplifier: $0.13 \times 0.13 \text{ mm}^2$

pMOS Amplifier: $0.13 \times 0.13 \text{ mm}^2$



- (1) Slew-Rate Enhancement With Direct V_{GS} Boosting
- (2) Adjustable ω_z Frequency-Compensation